

ELMECA WORKS Behind Railway Station, P.B. No. 17, DHARWAD-580007 (Karnataka state)



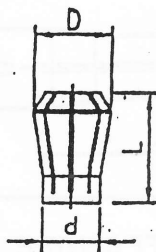
Phone No : 0836 - 2440177 / 2440178. Fax : 0836 - 2742600 & 2743600.
e-mail : elmecaworks@dataone.in / elmecaworks.12@gmail.com.

ELMECA COLLETS AND FEED FINGERS

For Automats, Capstans, Milling Machines, Drilling Machines, Grinding Machines, Special Purpose Machines, Pentagraphs Tool & Cutter Grinders, as per sample and drawing

COLLETS For Automats And Capstans	MACHINES	D	d	L	Max. Capacity		
					Dia	Hex.	Square
						TRAUB A -15	30
	TRAUB A - 20/HMT - TR-22	38	28	70	20	16	13
	TRAUB A - 25	45	32	75	25	22	18
	TRAUB A - 30	48	35	80	30	26	21
	TRAUB A - 42/HMT - TR-42	60	48	94	42	35	29
	TRAUB A - 60/PMT TBT-60	84	56	110	60	52.5	42.8
	HMT TR - 62	84	68	110	62	54	44
	Penomal (Sowmac) capstan 32 / HMT TR-32	49.1	38.1	100	32	28.5	25.4
	Penomal (Sowmac) capstan 36	55	44.45	100	36	33	27
	HERBET 2 - D	61.9	47.6	99.2	36	33	27
	HERBERT 4 - D	62.3	61.5	126.2	50.4	44	36
	SB - 4	10	6	30	4	-	-
	SB - 10	19.5	14	40	10	-	-
	AS - 32	69.4	53	130			

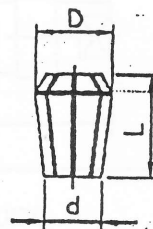
E-40 (STD. TYPE) Milling Collets
(For E-40 Type Collet Adaptors)



CAPACITY	D	d	L
3 to 25 mm or 1/8" to 1"	40	30	61

(In step of 1 mm or 1/16")

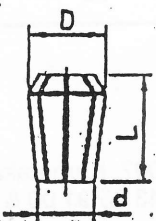
E-40 (SCHAUBLIN TYPE)
Milling Collets
(For E-40 Type Collet Adaptors)



CAPACITY	D	d	L
3 to 25 mm or 1/8" to 1"	40	30	46

(In step of 1 mm or 1/16")

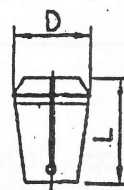
E-45 (SCHAUBLIN TYPE)
Milling Collets
(For E-45 Type Collet Adaptors)



CAPACITY	D	d	L
3 to 32 mm or 1/8" to 1.25"	45	35	50

(In step of 1 mm or 1/16")

E - SERIES Type Milling Collets



TYPE	CAPACITY	D	L
M-16	3 to 16	25.5	40
M-25	3 to 25	35.5	52
M-32	5 to 32	44.0	60
M-40	5 to 40	52.5	68
M-50	5 to 50	54.2	80